

Procuste

Quick Start Guide

How to create a digital image


If you don't have any digitalized headfilms available please use one of the following methods to convert classical documents into a digital format.

- Take photos of your headfilms with a digital camera Make sure that the camera is perpendicular to the film. Distance and size don't matter with Procuste.
- Scan your headfilm transferts using any kind of scanner.
- Scan your headfilms with a dedicated film scanner

You can also download examples from : www.procuste.com

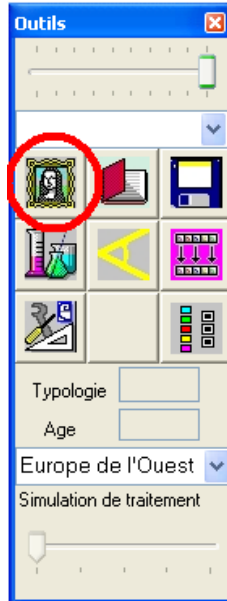
Copy the images into one of your computer directories (e.g. C:\... \My Documents\Procuste\)

Launch Procuste

Double click on the Procuste icon  showing on your desktop once Procuste has been installed.

Open an image

Click on the Open Image button of the tool box



You can adjust the image size by using the zoom track bar situated at the top of the tool box.

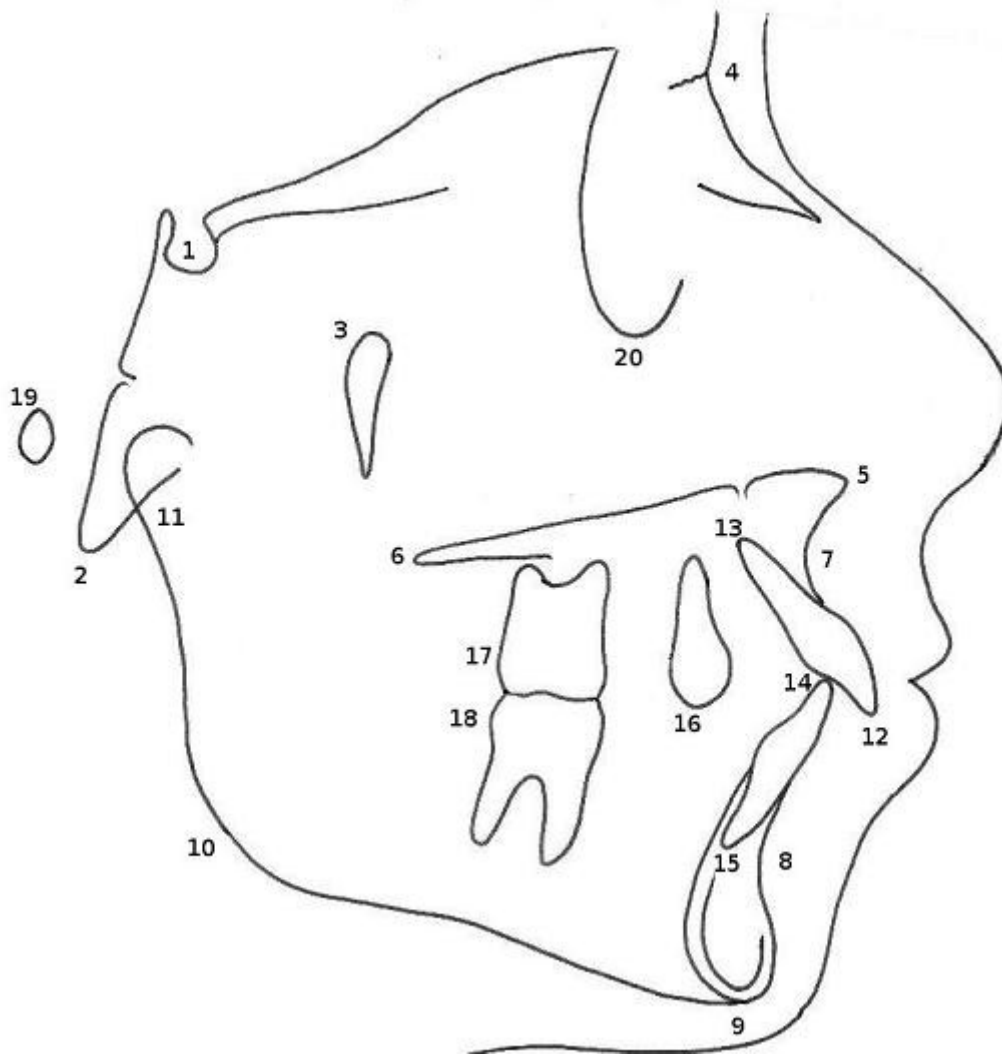
How to digitize the landmarks

Left-click to digitize the landmarks.

In case of misplacement, cancel with a right-click.

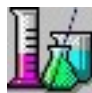
20 landmarks must always be digitised in the same order:

1. Sellion
2. Basion
3. Ricketts Pterygoid Pt Point
4. Nasion
5. Anterior Nasal Spine
6. Posterior Nasal Spine
7. Point A
8. Point B
9. Chin
10. Gonion
11. Articulaire
12. Incisal edge of maxillary incisor
13. Apex of maxillary incisor
14. Incisal edge of mandibular incisor
15. Apex of mandibular incisor
16. Occlusal point : projection of the 1st maxillary bicuspid on the true occlusal plane
17. Most distal point of the 1st maxillary molar crown
18. Most distal point of the 1st mandibular molar crown
19. Porion
20. Orbitale




Superimposition analysis



Click on the "Analyse" button  to superimpose an Optimum on the case. An Optimum is an ideal profile personalized according to the typology and the growth of each case (as with the V. Sassouni cephalometric analysis). The diagnosis is based on the differences between the Optimum and the case.

Save the document as a Procuste archive



Click on  to save a file that contains image and landmarks. Double click on this file in a file explorer will run Procuste and open the file.



Open a Procuste Archive



Click on  to open an archive file that contains image and landmarks.

Treatment superimposition

Changes related to treatment can be analysed using superimposition of pre-treatment and post treatment drawings. Size differences between headfilms don't really matter (thanks to the size normalization used by the method itself).

Open the pre-treatment file using  and the post-treatment file using  to superimpose the drawings.
